

# **Text extractions from documents into Elasticsearch**

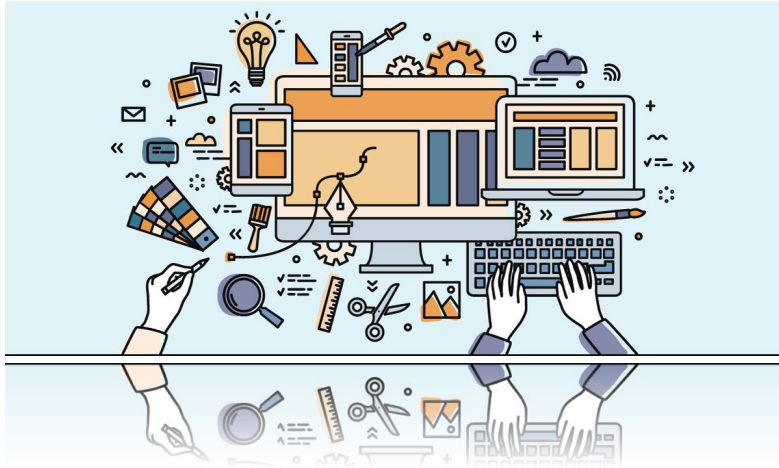
**Team Members:** Bruce Bitwayiki, Jared Hayashi,  
Rushal Sohal, Tiffany Mayberry



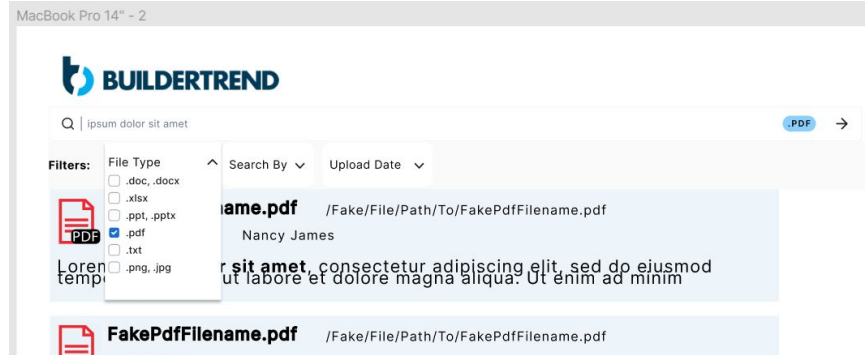
What is the measurement?  
What file is it in?



# Requirements & Constraints

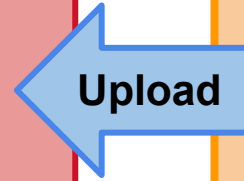
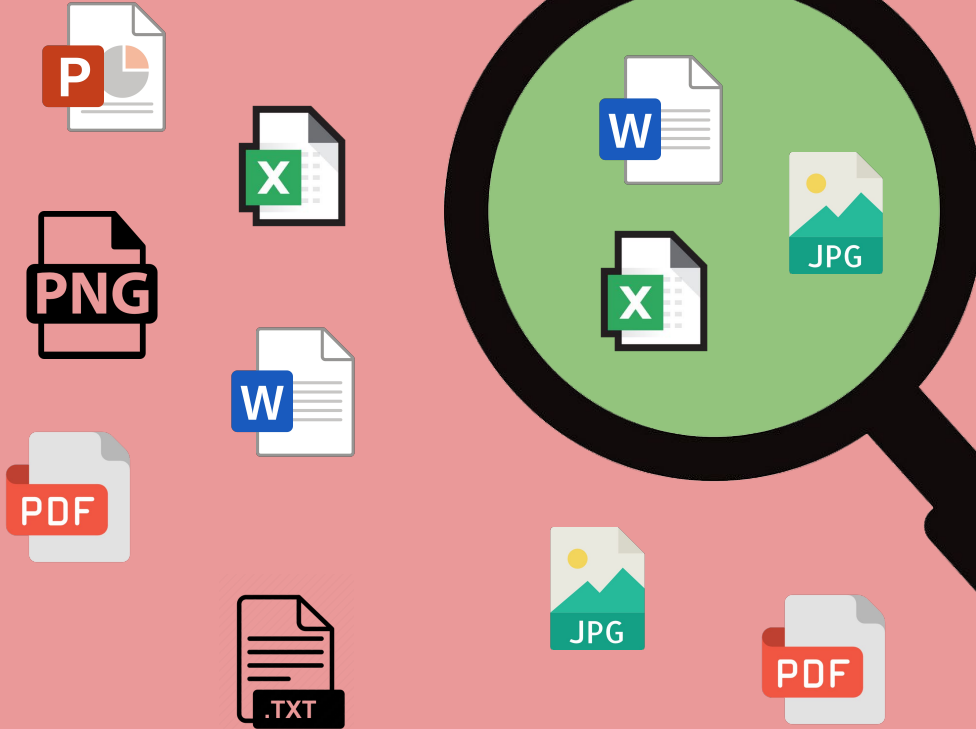


Functionality and  
Resources



User Interface and  
Aesthetics

# ElasticSearch



## Extract File Content & Metadata

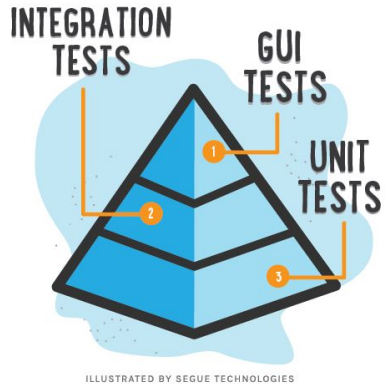


**Search for Files Containing:**  
"5213 Pines Dr."

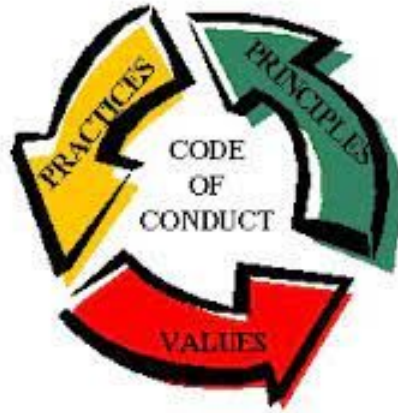
### Filters:

Only search .docx,  
.jpg, .xlsx files

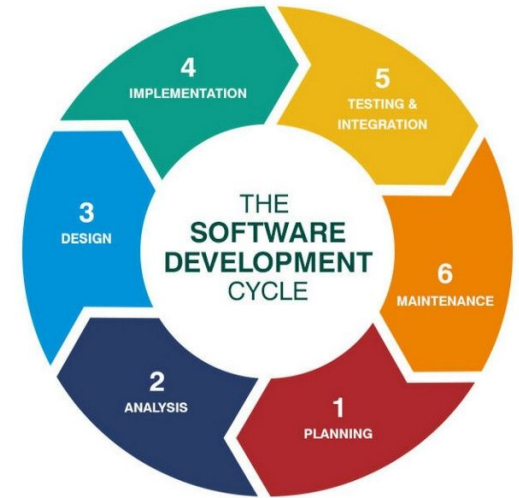
# Engineering Standards



IEEE-29119

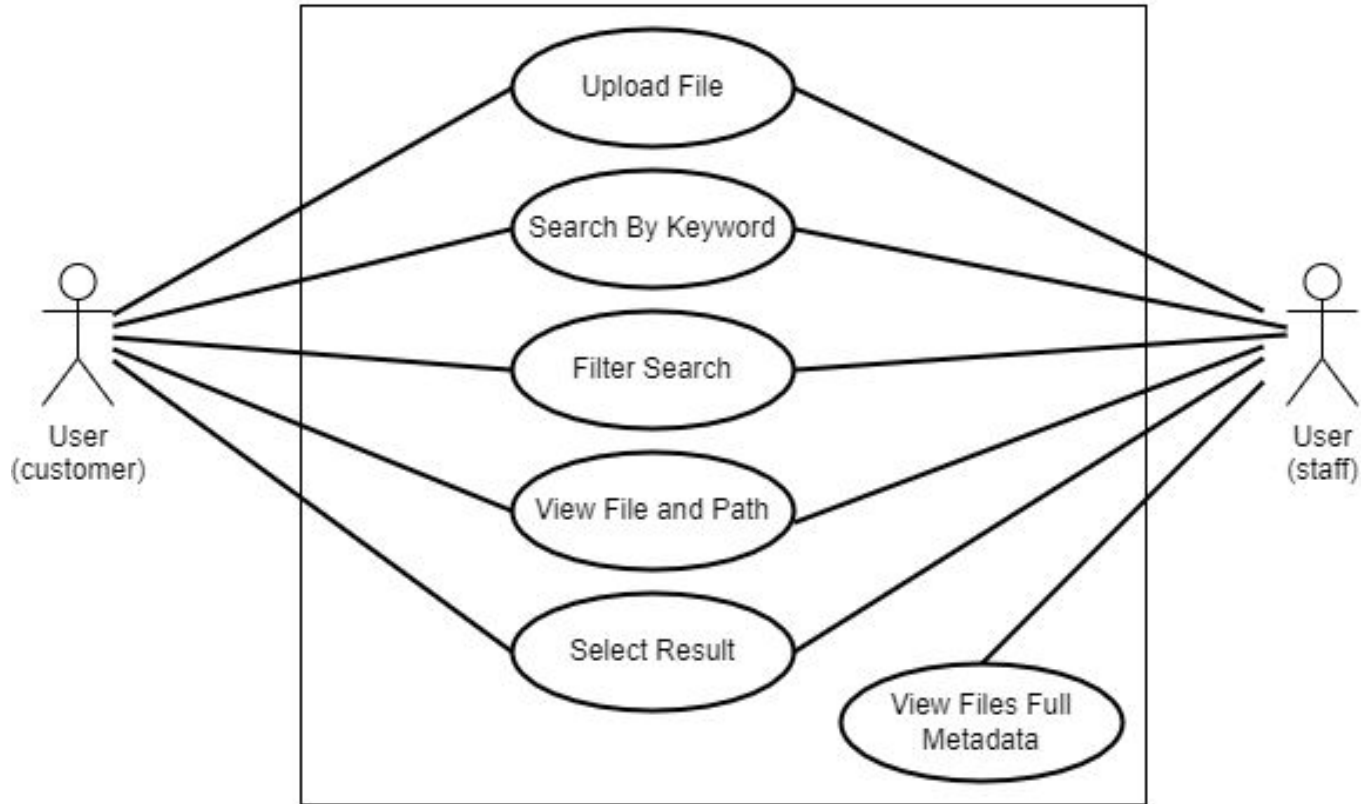


IEEE-7.8



IEEE-12207

## USE CASE DIAGRAM



## USER PERSONA



**Name:**  
Stephanie

**Profession:**  
Construction  
Manager

**Age:**  
33

**Personal  
Background:**  
From Pella, Iowa.  
Majored in Civil  
Engineering at Iowa  
State. Currently  
works at Emergent  
Construction

### Goals:

- Efficiently Manage Resources
- Find necessary files fast
- Organize tasks

### Challenges & Frustration:

- Not being able to find files easily
- Too many projects to manage at once
- Poor internet/data in some areas
- Team being unproductive

### Influences:

- Customer satisfaction
- Money/status
- Deadlines/time